

Student voice heard in university reappraisal meetings here

see page 2

Evaluation of referendum results

see page 3

Senate moves to end group's sex bias

see page 2

Editorials...

*Reappraisal shows
need for Babcock*

see page 4

Edwin O. Reischauer, former U.S. ambassador to Japan and presently on the faculty of Harvard University, will speak at 11:45 a.m., March 19, in room 105, Benton Hall.

Born in Tokyo, Reischauer holds degrees from Harvard and Oberlin College. He has been professionally interested in Japan and her people since 1945.



Student ideas heard in meetings

A university education should be more than a "mass production service," according to the undergraduate student response to the reappraisal of university goals and functions initiated by interim president C. Brice Ratchford.

A series of five meetings in March were held to solicit responses from the undergraduate sector here. Other segments of the university community to be polled are the school of business administration, the school of education, the college of arts and sciences, the academic advisory council, non-academic administration, the evening college, the various centers, graduate students and graduate faculty.

The university's mission, as undergraduates viewed it, involves supplementing a liberal arts education with "basic knowledge in those areas now tangential to every individual's existence," specifically pertaining to the environment.

The opinions stated in the document, "Preface to Decision," favored a liberal arts atmosphere "to counteract the trend in recent years towards vocational training."

While calling for high standards for determining who is qualified for a university education, the document endorsed the concept of remedial training as a preparation for university admittance.

Faculty and students were en-

couraged to get involved beyond the classroom environment, with the two groups associating freely with each other.

Establishment of an "Office of Institutional Research" was suggested as a means of making such evaluation a continuing process.

"Flexibility" was stressed in regard to the university's programs, adapted to the needs of students and the surrounding community.

Undergraduate opinion held that the university too often is "in a position similar to that of a candy store, with the teacher being hired as the chief clerk, doling out candy as he sees fit."

Credits, curriculum and grades should not be so sacred as to exclude a broadening of scope, they concluded.

An honors program, intensive study courses, and comprehensive examinations to determine competence in various areas were advocated.

Two-year degree programs should be left to junior colleges, with more Ph.D. programs to enable UMSL to compete financially with the other three campuses.

"No degree should connote a completed or terminated education," was the consensus.

Rather than increase financial burdens through such programs as journalism or engineering, this campus should arrange to subsidize students in their chosen programs, enabling them to attend

the campus in question.

A great emphasis was placed on quality teaching. (See editorial on Page 4.) The nature of teaching should be less bound to research and theory, and concentrate more on the art of teaching.

The section on resources "established the position of the university in a social milieu," and declared that "our basic concern in the formulating of priorities rests with the need for communication."

They stressed the need to keep the campus community informed of resource allocation.

In addition, if the university is to be deemed responsible, it must allow flexibility for individual con-

tribution. On this count, the present policies regarding the hiring and firing of faculty were taken to task, as encouraging "mediocre instruction and mediocre research."

Quality of all faculty, whether full-time or part-time, should be the top priority.

To enable the university to live up to its responsibility, the response of undergraduates felt that the legislature should provide adequate funding.

Other possible resources that could be tapped include alumni, business and industry.

Decentralization of the university-wide administration, as well

as increased autonomy for the various campuses, was regarded as the best method of improving the organizational structure of the university.

More cooperation among the various departments, and more effective means of selecting department chairmen, were called for.

The response listed a "Campus Senate" as a means of allowing participation of students and faculty in a decision-making, not merely an advisory capacity.

The document concluded that "the campus senate should take precedence over the selection of a new football coach."

Sex bias in organizations doomed by new policy

By MARY GLYNN
Current Staff Writer

Academic and professional organizations which discriminate in their membership policies on the basis of sex may be doomed to extinction.

Previous policy regarding organizations required that "organizations' membership shall not discriminate for reasons of color, creed, national origin or sex."

Fraternalities and sororities could get an exemption from the requirement applying to sex by petitioning the dean of student affairs.

This policy will still hold, but in a recently proposed amendment, regarding the "Policy on Student

Organization," the Student Affairs Committee zeroed in on academic and professional organizations.

On March 11, the Faculty Senate passed the amendment which provides that this type of organization must admit members of both sexes or it will not be recognized after the beginning of the fall semester, 1973.

Adoption of the amendment is still pending approval by Chancellor Glen R. Driscoll.

David R. Ganz, dean of student affairs and member of the student affairs committee, explained, "This does not mean that social sororities and fraternities will have to admit both sexes to retain recognition. They can still exist, in their present form, but are

faced with the burden of petitioning every semester."

He added that the reason for waiting until '73 before refusing recognition to organizations with discriminatory sex policies is "to afford all groups time to work changes into their constitutions regarding membership restrictions."

Delta Sigma Pi, an international business fraternity whose membership is restricted to men, is the only organization actually effected on this campus.

The entire policy on student organizations and the amendment have been designed, according to Ganz, "in an attempt to streamline procedures for group recognition pertaining to this campus."

Communication basis of peaceful campus

By MARGARET JENSEN
Current Staff Writer

A major problem involved with campus violence seems to be a "crisis of understanding," according to William Mathew Byrne, Jr., the former director of the President's Commission on Campus Unrest.

Students and other members of the community should make more of an attempt to communicate with each other and understand each other's points of view.

As an example, Byrne pointed out the fact that the nine members of the commission itself held very different positions in society and conflicting viewpoints, but were able to reach agreements through discussion.

Byrne stated that the first problem of the commission was to define campus unrest.

They classified the student protesters into three major groups--peaceful protesters, disrupters, and terrorists.

Peaceful protesters, which Byrne defines as students who make their point known without disrupting the functions of the university, are good and should be encouraged. Students should be allowed to disagree and state their opinions.

Disrupters are those students who make their opinions known in such a way as to prevent the university from carrying on its func-

tions, according to Byrne; for instance, a group of students who make so much noise that a professor with whom they disagree cannot give a lecture.

The third group of protesters, the terrorists, are those students who use violent means, such as bombings, to express disagreement.

Universities should have definite rules and make sure that students are aware of them, and then punish the students who break them.

No cause justifies breaking laws, according to Byrne.

When asked if any changes have been made as a result of the committee's report, Byrne replied that the National Guard is going to be re-equipped and will not carry M-1 rifles to stop protests.

Some universities have set up committees to study the report, and try some of the suggestions offered.

The commission's report should be available shortly in paperback form.

Cultures develop in social cycle

The options and alternatives for post-industrial society were discussed Monday by Dr. Amitai Etzioni, chairman of the Columbia University department of sociology.

"Our most central activity is using objects and destroying them," Etzioni explained. "There is a constant cycle of working and consuming. In the last twenty years there has been more questioning about values of science and rationality."

These values are being pushed aside to a subculture level and something else must take its place.

Do people want the objects that the industrial machinery produces?

"People want maybe half of the

objects," Etzioni remarked. "Capitalism may come apart because buying these products causes no deep gratification. Tensions and strains are building and we are seeing a permanent revolution."

"There are one of three possible subcultures that could develop," Etzioni said, "and each focuses on a different central activity."

"These central activities are a relationship to symbols, interpersonal relationships with others, or a participation in public affairs."

"To avoid a subculture development, we must make society itself the central activity," he pointed out.

On Campus

FRIDAY, MARCH 19th
8 am - 4 pm

Bake Sale sponsored by the Inter Greek Council, in the Cafe, Admin. Bldg.

11:45 am

Lecture by Edwin O. Reischauer, former U.S. Ambassador to Japan, room 105, Benton Hall. Sponsored by the University Program Board.

7:30 & 9:45 pm

Film Series: A Series of Animated Films. Room 101, Life-Sciences Bldg. 50¢ with UMSL I.D. Sponsored by the University Program Board.

opens 7:30 pm

Coffee House Concert featuring Don Crawford. Cafe, Admin. Bldg. 50¢ with UMSL I.D. Sponsored by the University Program Board.

8:30 pm

All School Mixer sponsored by Newman Club, in the Cafe-Lounge Bldg. Music by "Mississippi." \$1.00 with UMSL I.D.

8:30 pm

A Night of One-Acts. Three one-act plays presented by the University Players. Room 105, Benton Hall. No charge.

SATURDAY, MARCH 20th
opens 7:30 pm

Coffee House Concert featuring Don Crawford. Cafe, Admin. Bldg. 50¢ with UMSL I.D. Sponsored by the University Program Board.

8:30 pm

A Night of One-Acts. Three one-act plays presented by the University Players. Room 105, Benton Hall. No Charge.

SUNDAY, MARCH 21st
4 pm

Senior Recital, room 105, Benton Hall. No charge.

MONDAY, MARCH 22nd
8 am - 4 pm

Bake Sale sponsored by Sigma Tau Gamma, in the Cafe, Admin. Bldg.

2:45 pm

Concert by the St. Louis Jazz Quartet, room 105, Benton Hall. Sponsored by the University Program Board.

TUESDAY, MARCH 23rd
11:40 am

Open Meeting of new organization Campus Gold, for former Girl Scouts and Boy Scouts who want a chance to use their scouting skills, outdoor activities, Room 208, Admin. Bldg.

WEDNESDAY, MARCH 24th
8 pm

Film: Exterminating Angel, room 101 Life-Sciences Bldg. No charge.

THURSDAY, MARCH 25th
7:30 pm

Underground Films, room 101, Life-Sciences Bldg. No charge.

Referendum results out

Driscoll, Kaufman express opinions

By DONALD HAMMONDS
Current Staff Writer

Students expressed disapproval on the athletic fee increase at the held March 8, 9, and 10. In results made public last Friday, it was shown that by an 850 to 668 count, students disapproved of the fee increase. (for other results see below)

Chancellor Glen R. Driscoll and student president Barry Kaufman expressed opinions on the fee increase and the referendum.

Driscoll was asked what possible solutions could be used to alleviate the feelings that students had that they didn't have an adequate voice in the basic decision-making processes. He replied: "We have tried to set up a system of student governance on our campus with a sense of committees which are structured so that on each one there are two or more student representatives."

In order to encourage student involvement and the airing of student opinions, Driscoll said, "the students on the committees must report back to the Central Council, which represents the student body, in exactly the same way that faculty members on the committees must report back to the Faculty Senate." In this way, he explained the machinery for expressing student opinions in already working, though Driscoll admitted "the machinery didn't function smoothly this time."

Driscoll suggested that the "best way to get a larger sampling of student opinion is to, whenever possible, do it at the same time that we register or pre-register students for classes." Though this action would still be voluntary, Driscoll feels that there would be more student participation on a larger scale.

Kaufman felt that there was definitely room for improvement in student participation, and felt that the referendum served its purpose well, saying, "The process by which the fee was instituted has got to change. The issue of procedure is more im-

portant than the fee itself. It is to that end that we placed strong pressure on the appropriate people--and this was the purpose of the referendum." To ensure that student opinion is heard, and that more student participation will take place, Kaufman asserted that more referendums must be held.

Though it would seem that the fee will be increased regardless of the results of the referendum, Kaufman pointed out that the circumstances required that the student voice be heard.

"Too many students," said Kaufman, "particularly council members, felt negatively about the process used to raise the fee. It had nothing to do with the fee itself."

"To my knowledge," Kaufman continued, "there was only one body to which Driscoll addressed

himself concerning the athletic fee and that was the athletic committee of the faculty senate. I question that; is that the proper procedure? Should the athletic committee be the initial and final recommendatory committee to deal with the fee increase?" Kaufman continued that it was natural for the committee to ask for an athletic fee increase, but that the procedure should be changed.

Summing up his position on the referendum and fee forum, Kaufman stated, "I hope that through the forum and referendum we have successfully conveyed to Chancellor Driscoll and other individuals that the process used to implant the fee increase was short-sighted. In the future, the process should include more direct student participation through the Central Council and significant student participation as measured by numbers."

Driscoll shared Kaufman's opinion that the referendum served a good purpose, and felt that it offered him an opportunity to explain his position on how the campus machinery should operate.

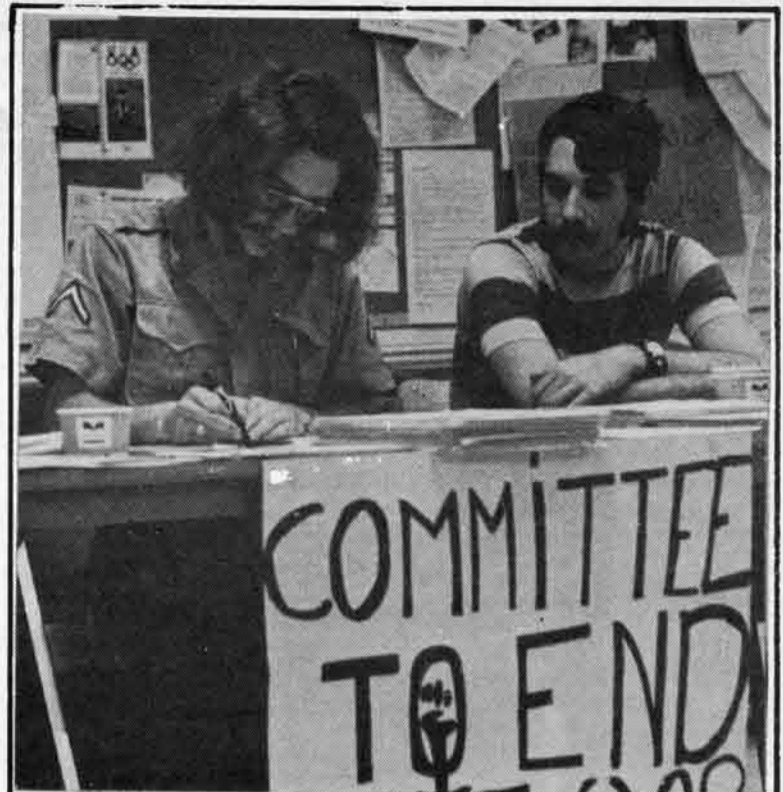
Driscoll pointed out that the machinery of student government offers ample opportunity for the expression of student opinion, as "the smooth functioning of the system we've set up for campus governance requires that there be complete faculty and student input on whatever decision we make on various issues."

Driscoll said that the Multipurpose building will be kept open day and night and will thus be available to night students, and that two new sports; swimming and wrestling, will be added. He is also recommending that there be no charge to students for athletic events.

On the proposed dropping of the D-F option, Driscoll said that he could not guarantee that the option will be available to the students. It was discussed at the last Friday's Senate meeting and is being considered by the appropriate committee.

Referendum results

	YES	NO
Proposed: That the Student Activities Fee be increased to \$24.50 per semester.	668	850
If the proposed fee fails which would you support an increase in:		
equip the Multipurpose building	1009	371
expand the intramural program	553	849
expand the intercollegiate athletic program	539	769
If your response is negative for the use of the fee for athletics, would you support it for other use?	530	542
Should the student body be considered when discussing a fee raise?	1366	103
Do you feel you had an adequate voice in the raising of the fee?	294	1161



The Committee to End the War table in the lobby of the administration building last week.

Current photo by Carl Doty

Anti-war group plans action

The Committee to End the War had a table set up in the lobby of the administration building throughout the past two weeks. They passed out leaflets on the work being done to put an end to the Indochina war, and literature concerning the black and feminist movements. One pamphlet they had was "All Power to the People," the story of the Black Panther Party.

As explained by Jay Brandt, (left), the Committee is an open forum where people can express their gripes about the war, our society, or any of the struggles for human rights that are being carried out presently.

The Committee plans a demonstration Friday to protest the McDonnell-Douglas representative that will be on campus. Two meetings were held this week to plan the demonstration, which all interested students are encouraged to attend.

Said Brandt, "There are a number of liberal organizations on campus. We are the radical group that has been needed."



The St. Louis Jazz Quartet will perform on campus Monday at 2:45 in room 105, Benton Hall.

St. Louis Jazz Quartet on campus Monday

The St. Louis Jazz Quartet will perform in room 105 Benton Hall on Monday, March 22, at 2:45 p.m.

The quartet consists of Terrence Kippenberger (string bass), Jeanne Trevor (vocals), Ken Palmer (piano), and Charles Payne (drums).

The four musicians will present an illustration of the improvisational nature of jazz with one melody which they will play in the various jazz styles.

Each of the four is an accomplished musician in his own right. Kippenberger is a member of the St. Louis Symphony and graduated from the St. Louis Institute of Music. He has toured both North and South America with small groups, working with folk-rock and jazz groups in California and St. Louis.

Jeanne Trevor hails from San Francisco where she studied opera and sang with jazz groups. She has appeared in concert with such well-

known artists as Count Basie and Dionne Warwick, among others.

Ken Palmer also graduated from the St. Louis Institute of Music. He studied music in Germany where he toured with Johnny Mathis, Phil Foster, and the Four Aces. He now has his own studio in St. Louis where he teaches organ, piano, and harpsichord.

Drummer Payne had his formal training in Europe. One of the finest jazz drummers in St. Louis, Payne has appeared with all of the best jazz groups here. He was drummer with Oliver Nelson's Studio Group at Washington University, and a percussionist with the Gateway Symphony Orchestra.

The concert is presented by the Performing Arts and Cultural Events (PACE) committee, in cooperation with the St. Louis chapter of Young Audiences, Inc.

COMMENTARY: Editorials and Opinions

Values need reappraisal

The undergraduate student response to Chancellor Driscoll's "Preface to Decision" program, a part of the university reappraisal initiated by interim president C. Brice Ratchford, reflects the opinion that a university education should not connote a "mass production" service. In such an atmosphere, teaching should be more than just lecturing, it should be an "art, which is far too often a rarity at this university."

The report stresses that "teaching should have the highest priority." According to the report, it is the student's opinion that research has been valued too highly, and that teaching should be given more emphasis. The report goes on to say that no matter how recognition and support of teaching ability is accomplished, "it goes without saying that the ultimate judge of teaching ability is the student."

We couldn't agree more. In line with these sentiments we heartily endorse the actions of the grievance committee of the Central Council on behalf of Dr. Muriel Babcock, who is facing a terminal contract after the tenured members of the biology department refused to recommend her for tenure.

No one can maintain that there is an overabundance of high quality teachers here. No one can say that a teacher whose past performance has been commendable can leave this university without detriment to its students.

If the report quoted above is to be valued as more than idle idealism, then the faculty and administration should take a hard look at their actions concerning Dr. Babcock.

It is a hard truth that principles are more often used as points of departure rather than the actual foundation of action, but in the case of Dr. Babcock, the principle involved is so vital to the functions of a university that their being compromised calls for a great hue and cry from those immediately affected, namely Dr. Babcock and the students.

If the biology faculty's decision to release Dr. Babcock was made on the basis of the university's guides on tenure, it should be apparent that these guides need revision as part of the university reappraisal.

Whatever the motives involved in Dr. Babcock's release, we feel the case should be reconsidered before she leaves, because good teachers don't grow on trees.

Take a good look at this picture. The administration building lobby will seldom be this empty again until the end of the semi-annual chorus of registration blues.

Current Photo by Carl Doty



LETTERS

Club fires back

Dear Editor,

The point of putting guns in hands of "people with a criminal record, or suffering from some dementia or not of age is infringing on the rights of personal safety for all citizens" is irrelevant. The Rifle Club does not randomly hand out guns and ammunition to people passing on the street. Our purpose is that of sport, of developing a skill, and not one of advocating violence. Send your letters to the U.S. Army, which teaches artillery to kill, maim and destroy.

The point "not of age" is also invalid. Since when is youth a type of insanity? The U. S. government sees fit to issue guns to men under 21.

Mary Dvorack

Dear Editor,

I agree with Troy Wippold's letter as far as the "right to bear arms" is concerned and of course, I don't want to see firearms in the hands of criminals and lunatics.

It has been the policy of government in recent years to spend millions of dollars forming commissions to study all the problems of our society. According to the Crime Commission, all we have to do to end crime is to register or confiscate all firearms.

Well, that sounds impressive but will it work? Do you think that criminals will register their weapons? Who is going to determine who is mentally competent and who isn't? What happens once the guns are registered? Should the legitimate shooter suffer because of the misuse by the few? At least I think we agree that people are the cause of violence and not guns.

The Rifle Club does not intend to put firearms in the hands of malcontents nor does it advocate the use of guns for other than sporting purposes. We acknowledge that there is a problem in that people do own guns and that

many of them do not know which end the bullet comes out.

If we avoid this reality, then we certainly would be guilty of "burying our heads in the sand."

Don Riechmann
President
UMMSL Rifle Club

Dear Editor,

Troy Wippold wrote that most people, including himself, do not want to take away the individual's right to keep and bear arms. I think he is right. However, it is people like Mr. Wippold who would unknowingly (or otherwise) do just that.

On the off-chance that the Rifle Club might teach a mentally unstable person how to safely and correctly handle firearms, Mr. Wippold would prevent the remaining 9999 students from enjoying the benefit of this service. He accused the Rifle Club of infringing upon rights. What the heck does he call what he is doing? But I guess it is easy to say that something is bad when you yourself never really wanted it in the first place.

Let me remind you of something, Mr. Wippold. Any 6-year old child who has ever seen a cowboy movie knows how to shoot a gun. Most adults already know how. If they don't, they can look under "G" in the encyclopedia and figure it out. In other words, everybody, even unstable people, can know enough about guns to make them work. The Rifle Club, however, teaches things that you don't see in cowboy movies or in encyclopedias. It teaches safety and responsibility--respect and care--right and wrong. The worst that could happen if a mental deviant did slip into the ranks of the Rifle Club would be that he would learn some of these attributes. At the same time, many others would also.

Mr. Wippold said that both he and Carole Kerr believe that, "We must change the priority that anyone who wants to learn about guns can." It is time that both

of these ostriches pull their heads out of the sand (or wherever else they managed to stick them) and look at the real world.

The real world is: the guns are already here, over 200 million of them. Most people already know how to use them. If a few of these people have criminal minds, nothing we can do will have much effect. But the remaining 98% should have the right to learn how to maximize their enjoyment with guns and minimize their risk of accidents.

Dale A. Schmid

MONEY-MAKER

Dear Editor,

There have been some excellent suggestions as to how to raise money to replace the activity fee such as laxative in the food and pay toilets. Might I interject however that the amount of funds available as a result of this project will not be as great as expected? Why? Control, my friends, control. With pay toilets and doped food the populace of the campus will begin to exert control over their bodies' needs and functions until they reach home. However, there is a solution to this. First one must make the toilet rooms a more desirable place to be. How? Piped-in music, a quiet but powerful fan system, a more relaxing decor. However, looking ahead, there will be crowding in the toilet rooms, so for an initial expenditure a waiting lounge can be installed between female and male toilet areas plus Canteen food and music provided for students with change in their pockets. While the people wait and the laxative takes effect, the people will become contorted and go into muscle spasms thus the music provides another purpose besides relaxation as a means for the people to hide their fits by dancing. A larger fee can be put on the juke boxes. With the exhaustive dancing, the crowd will, by the time they relieve themselves, be in better physical shape but exhausted, so there will be no need for other physical activities or activity fees. But where will the money go from this business? Obviously into more powerful laxatives and conversion of classrooms into toilets and waiting areas.

John Jolley

CURRENT

The Current is the student publication of the University of Missouri-St. Louis. It is entirely student edited and produced weekly. It is financed by both student activity fees and independent advertising and is distributed free to the UMMSL community.

Advertising and subscription rates available on request. Letters to the editor are encouraged as part of the continuing discussion of campus issues and events. No unsigned letters will be considered. The writer assumes all responsibility for the content of the letter.

The Current is located at Room 210, Administration, University of Missouri-St. Louis. Phone (314) 453-5174.

Matt Mattingly
Editor-in-Chief

Carl Doty
Feature Editor

Darrell Shoults
Managing Editor

Mike Olds
Sports Editor

Jerry Vishy
Business Manager

Bill Leslie
Director of Photography

Steve Dagger
Advertising Manager

Paula Lumetta
Circulation Director

UMSL needs DR. MURIEL BABCOCK

At Kiel

Three Dog Night here



Three Dog Night

Three Dog Night, who will appear at Kiel Auditorium this Saturday.

The California-based rock group Three Dog Night will perform at Kiel Auditorium on March 20 at 8:00 p.m. This is the group's third St. Louis appearance; their second as the featured act. Two years ago they appeared as guest artist at the Steppenwolf concert.

The group consists of a trio of vocalists, Cory Wells, Chuck Negron, and Danny Hutton, and the four-member back-up group. The seven compliment each other in a manner that has produced four gold records. The first, entitled simply "Three Dog Night," was recorded in two days after the group had lived, work, and sang together for months. Their other gold-album efforts are "Suitable for Framing," "Captured Live at the Forum," and "It Ain't Easy." The group has two albums out now, "Naturally," and "Golden Biscuits," a collection of their greatest hits.

While Three Dog Night has achieved high levels of recorded success, they are still a performing act. In the words of Danny Hutton, "We feel a sense of obligation to them (the audience) and they appreciate it."

Tickets are \$4, \$5, and \$6 and may be purchased at the Kiel Box Office at 1400 Market in St. Louis; or at Goldie's Ticket Agency, 812 Olive Street, in the Arcade Building in downtown St. Louis. The concert is presented by Golden Star Productions.

**SUPPORT
CURRENT
ADVERTISERS**

WANT QUALITY CONTRACEPTIVES?

Once upon a time, the best male contraceptives that money could buy were in your local drugstore. That time is gone. Today, the world's best condoms come from England, and are available in America only from

POPULATION PLANNING

the exclusive U.S. distributor for two remarkable (and highly popular) British condoms—scientifically shaped NuForm and superfine Fetherlite—And we make them available through the privacy of the mails. Both are superbly fine and light—lighter than drugstore brands. They average 1.25 gms apiece to be precise. These contraceptives are made by LR Industries of London, the world's largest manufacturer of contraceptive products. They not only meet rigorous U.S. FDA specifications, but are made to British Government Standard 3704 as well. You won't find a more reliable condom anywhere.

Interested? If you'd like samples, send 25¢ for each. Or write for full information without obligation. We'll send you details about our complete line of men's contraceptives. (We explain the differences between the brands). We also have foam for women. And books on birth control, population, and ecology. What are you waiting for?

POPULATION PLANNING, ASSOC.
Box 2556-C, Chapel Hill, N. C. 27514

Gentlemen:

Please send me sample _____ NuForm; _____ Fetherlite. I enclose 25¢ for each; _____ full details without obligation.

Name _____

Address _____

City _____ State _____ Zip _____

CURRENT CLASSIFIED

ROOMMATE WANTED

Girl 20-26 to share apartment near campus with 2 girls, call Pat or Marge - 427-7510.

JOB INFORMATION

Men of all trades to NORTH SLOPE, ALASKA and the YUKON, around \$2800.00 a month. For complete info, write to Job Research, P.O. Box 161, Stn-A Toronto, Ont. Enclose \$3.00 to cover cost.

MISCELLANEOUS

Europe for \$199, Boeing 707 jet New York to London round trip June 11 to Aug. 17, call Bill Sarnoff, 726-2116 from 9 to 5 or 968-2367 after 11 pm.

MISCELLANEOUS

Nam Vets with knowledge of war crimes, call 383-8349 to aid veterans group against the war.

Model rocketry! Join the St. Louis Club. 727-1566.

FOR SALE

Shag carpet tiles 19¢ each, 9x9 Mill run carpet for ceilings, walls, floors, cars, can be used anywhere. At Morrie's carpet Center 2464 West Clay only 6 mi. west on 170 at the Weldon Springs exit in St. Charles Plaza. Phone 729-4995 student discounts!

CLASSIFIED ADVERTISING RATES

Classification:

- For Sale
- For Rent
- Wanted
- Help Wanted
- Autos
- Personal
- Lost & Found
- Services
- Miscellaneous

To order classifieds send copy written as you wish it to appear along with the completed form on the left to:

UMSL Current
Room 210
Administration Bldg.
University of Missouri
Saint Louis, Mo. 63121

Issues to Run:

1 2 3 4 5 6 more

Insertion Date:

Calculate the charge at 25¢/line. Each line should contain 30 characters (counting all spaces, punctuations, and capital letters as two spaces)

Name _____

Date _____ Student # _____

Phone _____

Address _____

City _____ State _____ Zip _____

Amount Enclosed _____



THE FALSTAFF INN (1920 Shenandoah)

presents

W.C. FIELDS FILMS

(An Afternoon Festival)

Clips from his best including

A Fatal Glass of Beer, The Great Chase, etc.

Date: March 26, 1971

Time: 2:30 p.m. to 5:00 p.m.

on a first come first served basis

I.D. Required

"WHAT IS THE MEANING OF PRAYER?"

Friday, March 19, 1:10 - 12:30

Discussed by Father Bill Lyon

In the Ecumenical Ministries Lounge
8000 Natural Bridge

Students and faculty welcome

Parking available during this period

Do all your banking at
Friendly, Courteous, Neighborly



Normandy Bank

AREA CODE 314
EV. 3-5555



7151 NATURAL BRIDGE

SAINT LOUIS, MISSOURI 63121

Between homework and classes there's little time left for leisure; don't spend it running around to pay your bills or purchase money orders. A mere 6¢ stamp will deliver your check. Your cancelled check is your receipt. Your check book will help you manage your money more wisely and help prepare you for business or home making in the near future.

Blue night

The UMSL Hockey Club took on the Blue Liners, a Winterland League senior men's squad, in a match March 9 at Granite City Municipal Rink.

UMSL, sporting a 3-1 record, stopped the Blue Liners, who have compiled a 10-2 mark in league play, 5-2.

"Tom Koenig did a fine job in goal," said manager Mike Mergler, "and he usually doesn't play that position."

Tim Landwehr and Bill Pavletich both scored twice for UMSL and Pat O'Neill tallied one in the victory.

Tennis rebuilds

Continued from page 8

"This schedule is tough enough for us," said the net mentor, "this is a rebuilding year, of course."

Returning from last year's team are Ray Ruby, Ron Williams and Les Cornelius.

Six freshmen round out the squad at present. They include last year's St. Louis Muni 18-year-old champion Tim January, Dave Laudel, Dennis Anglin, Bill Pavletich, Larry Susic and Bob Cushing.

The team will open March 31 at Washington University.

The future? "We have three players sitting out right now, due to ineligibility, who would give us a 10 or 12 win season," said Williams, "I know that."

But, for the present, the squad is still open, for the benefit of any students still interested in trying out. Those who are should contact the athletic department.

Lettermen lead linkmen

Continued from page 8

said Berres. "I told the team that if they played as well as they played last year, they most certainly will finish lower."

The Rivermen came in 24 of 40 last year, competing against many southern teams who finished their season in April.

The Red and Gold will open their regular season April 5 with a match at Southern Illinois-Carbondale. Other schools on the schedule include St. Louis University, Washington University, Bradley, Eastern Illinois and Southern Illinois-Edwardsville.

Leading the Rivermen this year will be returning lettermen Doug Solliday and Ron Brewer, who was named UMSL Golfer of the year the past two seasons. He shared the award with Tom O'Hare last year.

Gary Walschauser, a sophomore letterman, who played well during the latter part of the 1970 season and Mike Prendergast, a junior transfer, add additional experience to a team that boasts three fresh-

men, two sophomores and another junior.

John Raphkar, a transfer from St. Mary's College in O'Fallon, is that junior. The freshmen include Gene Dodson, who won last fall's UMSL Open, Jack Theodorow and Ron Meyer.

Sophomores Dave Buchanan and John Killenberg finish out the roster.

SUPPORT CURRENT ADVERTISERS

See our new imitation leather in two colors



JUST PANTS

7217 natural bridge phone
saint louis, missouri (314) 383-7610
8 blocks east of UMSL

DATE MATE
where compatible partners meet.
5 Dates... \$6.00
781-8100 - Anytime



Saint Louis Gateway Dialog

APPLICATIONS NOW BEING ACCEPTED
UMSL Students, Faculty & Staff
STUDENT ACTIVITIES OFFICE
117 Administration thru APRIL 2nd

A Student-Corporate-Community Discussion on Pollution in the Saint Louis Area

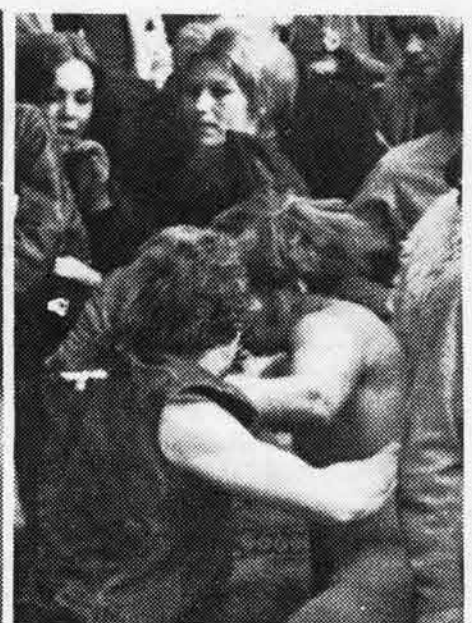
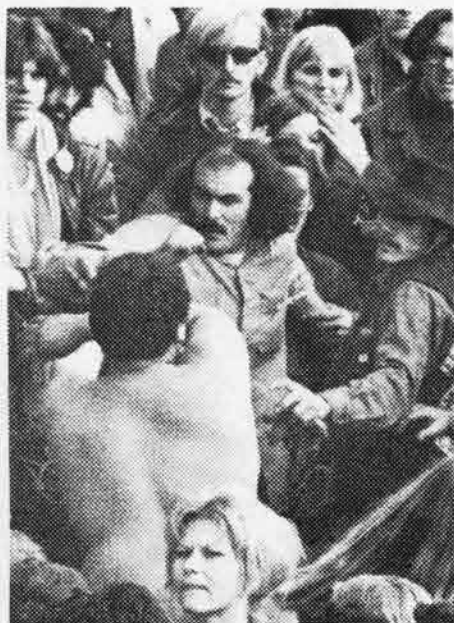
FRIDAY & SATURDAY, APRIL 16th & 17th, SIU-E

Involving:

Southern Illinois University - Edwardsville
University of Missouri - Saint Louis
Washington University
Webster College
McDonnell-Douglas Corporation
Monsanto Company
Peabody Coal Company
Ralston Purina Company
& Governmental Agencies
A National Program of CIRCUNA

THIS MOVIE IS SO POWERFUL BECAUSE WHAT IT SHOWS REALLY HAPPENED

THERE IS TREMENDOUS IMPACT ON YOU, WATCHING PEOPLE CAUGHT IN AN EVENT OUT OF CONTROL. IT'S ALL HERE. 300,000 PEOPLE WHO CAME TO ALTAMONT, CALIFORNIA, THE ROLLING STONES, THE JEFFERSON AIRPLANE, TINA TURNER, THE HELL'S ANGELS. FOUR DIED, HUNDREDS WERE HURT. SOMEONE WROTE IN ESQUIRE MAGAZINE, 'THERE ARE SOME THINGS WHICH AREN'T TRUE, EVEN IF THEY DID HAPPEN. ALTAMONT IS LIKE THAT.'



THE ROLLING STONES GIMME SHELTER

NOW SHOWING

STADIUM CINEMA 2
7th-Chestnut 534-8330

KIRKWOOD CINEMA
On Lindbergh Blvd. 822-0700

LATE SHOW
FRIDAY & SATURDAY
Both Cinemas
11:30 P.M.

YACHTING SUMMER POSITIONS

The American Yachting Association with listings on the East Coast, West Coast, Gulf Area, and the Great Lakes is soliciting for summer crew applicants.

Positions are available for experienced as well as inexperienced male and female college students and graduates. Experience in cooking and child care may be particularly helpful.

Crewing affords one the opportunity to earn reasonable sums while engaged in pleasant outdoor activity.

To apply type a 1 page resume following as closely as possible the form shown below. In April your resume will be edited, printed and sent to approximately 1500-2500 (depending on area) large craft owners.

RESUME FORM--(1) name, address (home and school), phone number, age; (2) relevant work or recreational experience; (3) dates available and area(s); (4) 2 or more students wishing to work together, state name of other parties; (5) other information.

Send your resume with \$6 processing fee to:

American Yachting Association, Suite 503, 8730 Sunset Blvd., Los Angeles, California 90060. Your resume must be received no later than March 26, 1971.

